

For Further Information

Please contact
Takasaki Municipal Tourism Society
Takasaki Tourism Association
Address: 35-1 Takamatsu-cho, Takasaki-shi, Japan
370-8501
Phone: (+81) 27-321-1257
E-mail: kankou@city.takasaki.gunma.jp
http://www.city.takasaki.gunma.jp



The information posted on this site is current as of January 2008.

Souvenirs

Sake

Sake is brewed at the Makino Sake Brewery, Takasaki's exclusive sake brewery. Sake is made from rice and water. The Makino Sake Brewery uses Mt. Haruna's famous spring water to create a full bodied sake with a true sake aroma.



noodle stew

Takasaki is a major producer of high quality wheat and many of the city's specialty dishes use wheat flour. Takasaki udon is made from a locally grown strain of wheat called "Kinu-no-nami" that gives the noodles their distinctive slippery and springing texture. Visitors can also try the Okirikomi, a local stew made from wide noodles and vegetables, including daikon and taro.



Japanese Plums

Takasaki is the largest producer of Japanese plums in eastern Japan, both in terms of quantity and growing area. The Haruna and Misato Plum Groves contain 220,000 plum trees and many people visit the groves in March to see the blossoms. Many plum based products are made here, including plum wine, plum juice, as well as umeboshi (dried pickled plums).

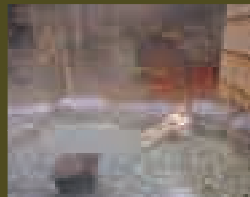


Onsen (Hot Springs)



There are many onsens in Takasaki that are surrounded by nature.

Aimagawa Onsen Fureaikan
[Comunion Hall]
(+81) 27-378-3834
(hotel accommodations available)



Kurabuchi Onsen
(+81) 27-378-2311
(hotel accommodations available)

Kamezawa Onsen
(+81) 27-378-4126 (hotel accommodations available)

Okukawaura Onsen (Artificial Onsen) Hamayu Sansou
[Hamayu Lodge]
(+81) 27-378-2333 (hotel accommodations available)

Kurabuchi Welfare Center Seseragi-no-yu [Babbling Water]
(+81) 27-378-3440 (day trip only)

Gunma Onsen Yasuragi-no-yu [Comfort Waters]
(+81) 27-372-4126 (day trip only)

Harunako Onsen [Lake Haruna Onsen] Yusuge-motoyu
(+81) 27-374-9211 (hotel accommodations available)

Harunako Onsen [Lake Haruna Onsen] Lakeside Yusuge
(+81) 27-374-9131 (hotel accommodations available)

Haruna Onsen Spa House
(+81) 27-374-9226 (hotel accommodations available)

Takasaki Kannon-yama Onsen Kin Zansou (Kin Lodge)
(+81) 27-322-2916 (hotel accommodations available)

Kyogashima Tennen Onsen Yutori
(+81) 27-350-8811 (day trip only)

A number of Japan's leading onsens are located just outside Takasaki.
Ikaho Hot Spring (55 minutes by bus from Takasaki Station)
Kusatsu Onsen (1 hour 30 minutes by train, or 30 minutes by bus from Takasaki Station)

Event Calendar

January	1st Takasaki New Year's Day Concert/Gunma Music Center (Takamatsu-cho) Hatsumode (New Year's visit to a shrine)/Haruna Shrine (Harunasan-machi), etc. 6th and 7th The Daruma Market (Shorinzan Feast of the Seven Herbs of Health Festival)/Shorinzan Daruma Temple (Hanadaka-machi)
February	Late February to Late March Misato Plum Festival/Misato Plum Grove Late March to Early April Takasaki Film Festival/Takasaki Cultural Hall (Suehiro-cho) and other local movie theaters. Third Sunday in March Haruna Plum Blossom Festival/Haruna Cultural Hall
April	Early April Shin-machi Cherry Blossom Festival/Self-Defense Forces Shin-machi Military Post (Shin-machi) Early April to Early May Misato Moss Pink Festival/Misato Moss Pink Park (Misato-machi Matsunosawa)
May	May 5th Tsunoehiyama (Mt. Tsunoochi) Exchange Mountain Climb/Hamayu Sansou (Hamayu Lodge) Late May Yugenomori Concert (Ethereal Forest Concert)/Haruna Shrine Kagura Hall (Harunasan-machi)
July	Last Sunday in July Misato Furusato Summer Festival - Fureai Park [Comunion Park] (Misato-machi Nishiakiya)
August	August 15th Haruna Furusato Festival and Commerce and Industry Festival Fireworks/Karasugawa Park (Shimomuroda-machi) August 16th Shin-machi Furusato Festival Karasugawa Grounds (Shin-machi) Mid-August Kurabuchi Summer Festival/Kurabuchi Branch Office (Kurabuchi-machi Sannokura) Late August Takasaki Byakui Dai-Kannon Candle Festival "Mandoe" (Buddhist Lantern Festival/Jigenin (Shihara-machi)) Late August Gunma Hanawa-no-sato Festival/Yawatatsukakofun (Yawatatsuka Ancient Tomb) (Ide-machi) First Friday in August Haruna Festival Fireworks/Haruna Lakefront (Harunako-machi) First Saturday and Sunday in August Takasaki Festival/Motenashi Hiroba (Welcome Plaza) (Takamatsu-cho)
October	Early October Takasaki Raibu Festival [Takasaki Thunder Dance Festival]/ Motenashi Hiroba (Welcome Plaza) (Takamatsu-cho) First Sunday in October Minowanosato and Kitsune-no-yomeiri Pageant (Monowanosato and Fox Bride Pageant)/Misato Branch Office (Misato-machi Nishiakiya)
November	Late November Takasaki Ebisu Market/Central City
December	Early December to Early January Takasaki Pageant of Light/Takasaki City Hall and Vicinity (Takamatsu-cho) Mid December to the 25th Lake Haruna Illumination Festa / Lake Haruna Lakefront (Lake Haruna)



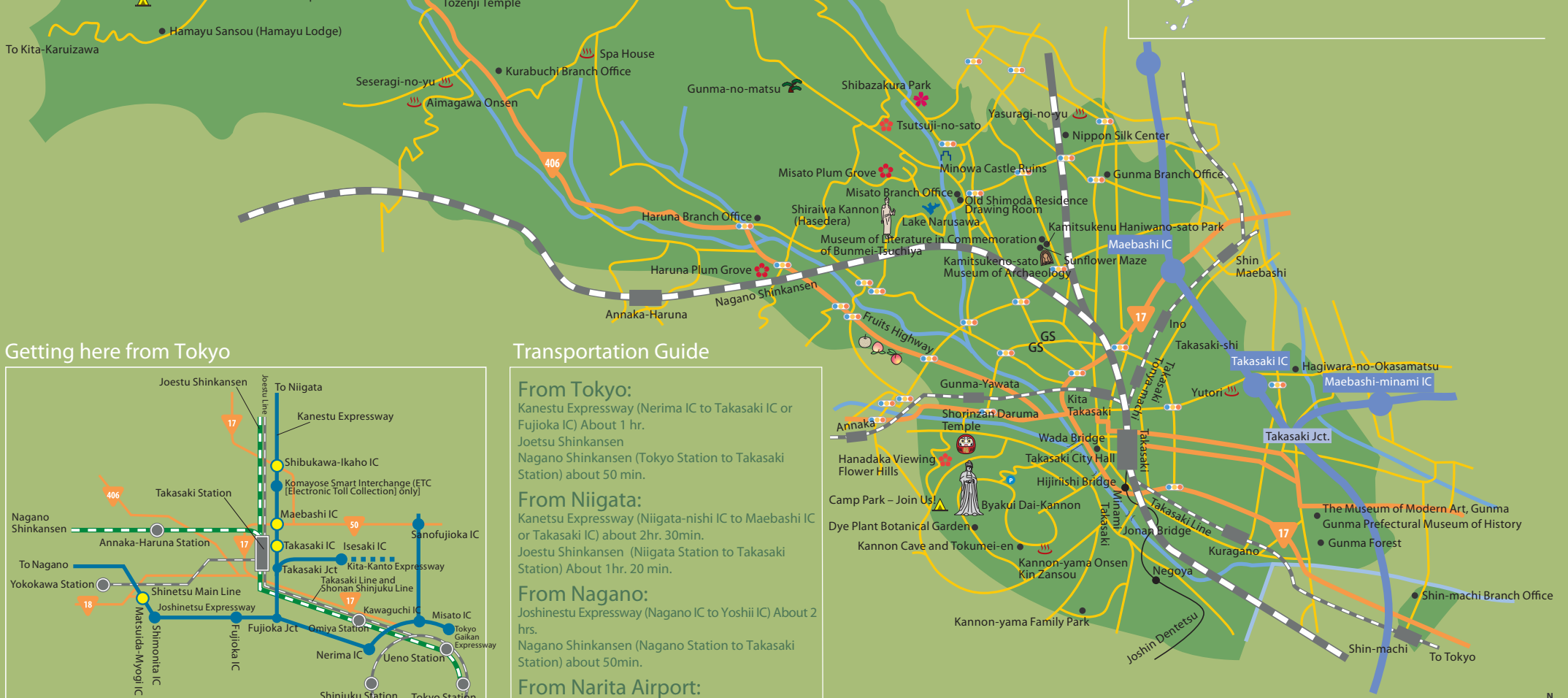
Minowanosato and Kitsune-no-yomeiri Pageant



Haruna Festival Fireworks

Takasaki Area Map

Takasaki City Map



Getting here from Tokyo



Transportation Guide

From Tokyo:
Kanetsu Expressway (Nerima IC to Takasaki IC or Fujioka IC) About 1 hr.
Joetsu Shinkansen
Nagano Shinkansen (Tokyo Station to Takasaki Station) about 50 min.
From Niigata:
Kanetsu Expressway (Niigata-nishi IC to Maebashi IC or Takasaki IC) about 2hr. 30min.
Joetsu Shinkansen (Niigata Station to Takasaki Station) About 1hr. 20 min.
From Nagano:
Joetsu Expressway (Nagano IC to Yoshii IC) About 2 hrs.
Nagano Shinkansen (Nagano Station to Takasaki Station) about 50min.
From Narita Airport:
Highway Express Bus (Narita Airport to Takasaki Station East Exit) about 3 hrs.

Locating Takasaki on the Map



英語 English

福
Welcome

高崎
Takasaki